

SPECIFICATIONS

DESCRIPTION:

Compact recessed in-grade fixture with square bezel and adjustable light source. Suitable for wet/damp location installations.

MATERIAL:

Standard overall material is 6061 aluminum.
HL-826 - Machined Aluminum

FINISH:

- AA** - Anodized Satin Aluminum
- AP** - Powder Coat Aluminum
- BK** - Powder Coat Black
- BZ** - Powder Coat Bronze
- WT** - Powder Coat White

LAMPING:

Lamp Type - 12V Halogen MR16 lamp, bi-pin GX5.3 base, 50W max, not included.

VOLTAGE:

12 - 12 VAC output transformer required, not included.

MOUNTING:

Suitable for installation into concrete, masonry, or any non-combustible material

OPTIONS:

Lenses/Louvers/Color Filters

- LA-1** - Hexcell Louver (Black)
- LA-2** - Prismatic lens
- LA-3** - Linear spread lens
- LA-4** - Soft focus lens (diffused)
- LA-5** - Moonlight lens
- LA-6** - Blue lens

Other

LA-820 - Lens and louver holder

Pour Housing

HL-826PH - Aluminum

See fixture accessories for more information.

SAMPLE ORDER SPECIFICATION:

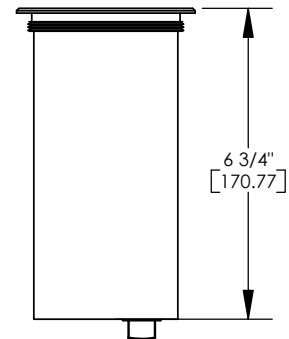
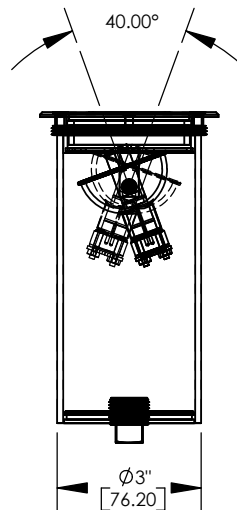
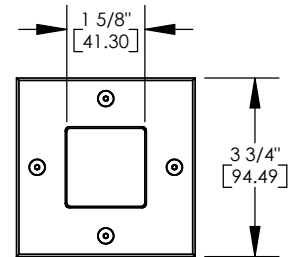
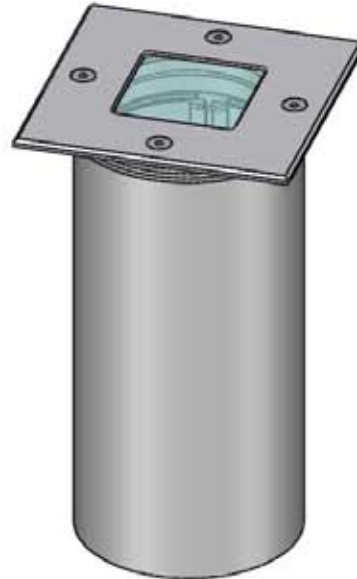
HL-826-AA-12-LA-3-LA-820-HL-826PH

RATING:

Wet/damp location.



MADE IN THE USA



ORDER SPECIFICATION: _____ - _____ - _____ - _____ - _____
Fixture Finish Lamping Voltage Options/Access.

PROJECT:
 APPROVED:
 NOTE:
 TYPE:

Master Canadian Distributor:



Web: www.spectraltv.ca | Ph: 905-751-8490 | Fx: 905-836-6772